



BROOK GAMBLE



1 Browning Walk, Eastbourne, BN23 7QU

£329,950

Brook Gamble are delighted to offer a stunning three-bedroom semi-detached house located in Browning Walk in the charming town of Eastbourne. This delightful property boasts a spacious lounge, perfect for relaxing or entertaining guests, alongside a separate dining room that provides an ideal setting for family meals or gatherings. The tasteful modern decor throughout the home creates a warm and inviting atmosphere, making it easy for you to envision your life here. Each of the three bedrooms offers ample space, ensuring comfort for all family members or guests. The property also features a well-appointed bathroom. Benefits of the property include a garage with an electric door, providing secure parking and additional storage options. There is also an off-road parking space, making it easy for you and your visitors to come and go without the hassle of street parking. Another great addition is the double glazing and gas central heating. A spacious garden with the possibility to extend the property (subject to planning) make this home a must view!

Accommodation Comprising

Double glazed main front door

Entrance hallway

Storage cupboard with shelving.

Ground floor cloakroom

Low-level w.c, wash hand basin, heated towel ladder, wall mounted storage cupboard, double glazed window to side aspect.

Hallway

Radiator, stairs rising to 1st floor landing

Lounge

Coving to ceiling, radiator, Sky TV aerial point, and full fibre broadband point, further radiator, double glazed window to front aspect overlooking front garden, Concertina door leading through to dining room.

Dining room

Coving to ceiling, radiator, double glazed window to rear aspect overlooking rear garden. Square arch leading through to kitchen.

Kitchen

Fitted in a range of wall and floor white gloss fronted cupboards and base units, single bowl sink unit and mixer tap, complementary worksurface, tiled splashback, fitted fridge freezer, inset four ringing gas hob with extractor hood above and double oven beneath, space and plumbing for washing machine, pull out larder cupboard, cupboard concealing wall mounted gas central heating boiler, double glazed door leading onto rear garden double glazed window overlooking rear garden. Radiator.

First floor landing

Double glazed window to side aspect, hatch to loft with pull down ladder and boarded loft. Airing cupboard housing hot water cylinder with shelving above.

Main bedroom

Radiator, double glazed window to front aspect.

Bedroom two

Radiator, double glaze window to rear aspect overlooking garden

Bedroom three

Radiator, double glazed window overlooking front garden. Built-in storage cupboard.

Bathroom

Comprising large walk-in shower cubicle, wall mounted electric shower with riser rail, fitted splash

panels, low-level WC, wash hand base and vanity unit, with matching wall mounted cupboards for storage, heated towel ladder, double glazed window to rear aspect.

Front garden

Laid to lawn with pathway to house.

Rear garden

Brick wall borders to one boundary, and fencing to adjoining semi. Laid mainly to lawn, patio area gate to rear giving access to garage.

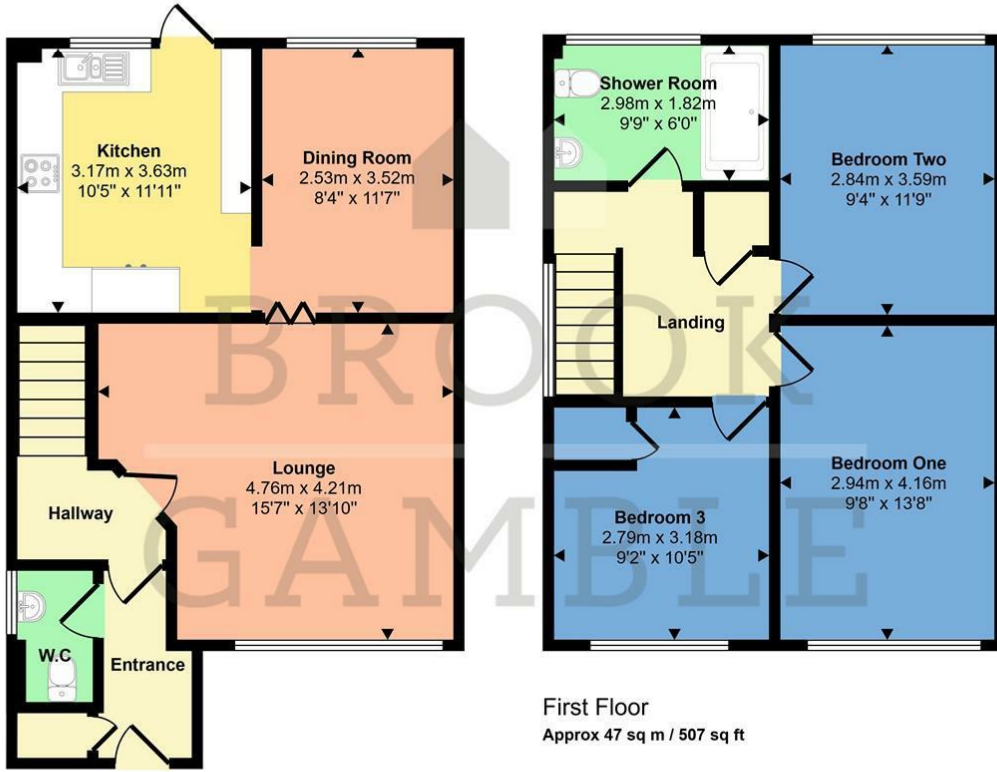
Garage

Up and over door, double glazed window.

Council tax band C

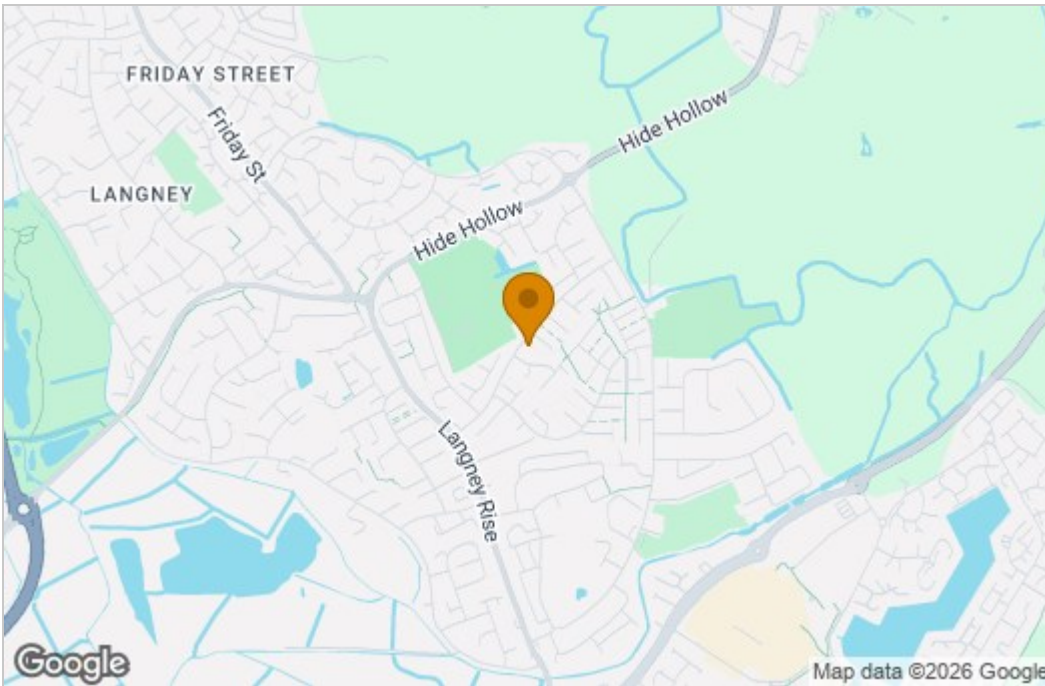
Floor Plan

Approx Gross Internal Area
97 sq m / 1045 sq ft

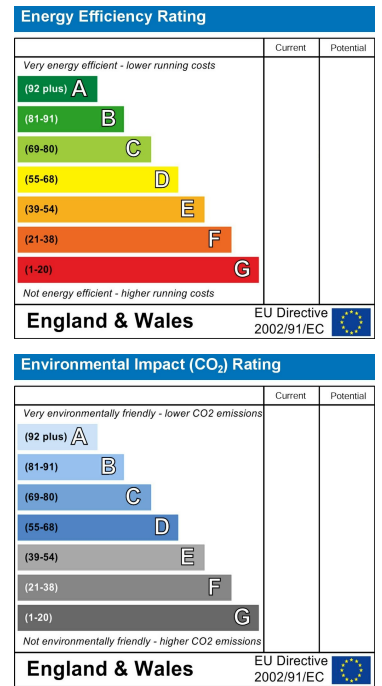


This floorplan is only for illustrative purposes and is not to scale. Measurements of rooms, doors, windows, and any items are approximate and no responsibility is taken for any error, omission or mis-statement. Icons of items such as bathroom suites are representations only and may not look like the real items. Made with Made Snappy 360.

Area Map



Energy Efficiency Graph



These particulars, whilst believed to be accurate are set out as a general outline only for guidance and do not constitute any part of an offer or contract. Intending purchasers should not rely on them as statements of representation of fact, but must satisfy themselves by inspection or otherwise as to their accuracy. No person in this firm's employment has the authority to make or give any representation or warranty in respect of the property.